

# focus.

Focus Pods by IQ Commercial.

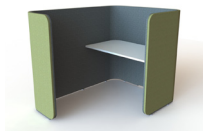


# FOCUS PODS

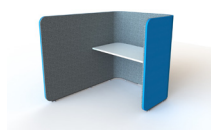
## by IQ COMMERCIAL



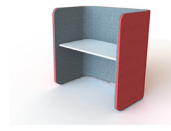
RETURN  
FOCUS POD



LONG TAIL  
FOCUS POD



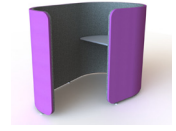
SHORT TAIL  
FOCUS POD



EXCHANGE  
POD



CURVED  
TASK POD



### DIMENSIONS

1320H  
1300W  
1700D

1320H  
1300W  
1700D

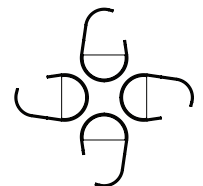
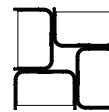
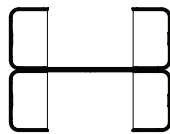
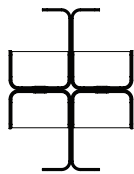
1320H  
1300W  
820D

1800H  
1000W  
720D

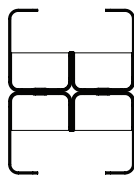
1400H  
1100W  
1700D

### ACOUSTICS

Developed in collaboration with award winning firm Revolution Fibres, the Focus Pods feature Phonix™ nanofibre as an acoustic substrate designed to enhance the absorptive features of the soft walls. Using thousands of layers of nanofibre in a proprietary composite, the unit aims to improve passive acoustic performance in the mid frequency ranges associated with voice related sounds.



### IDEASTARTERS



### NOTES

- Power & Data options enable either casual, drop-in working or longer-term concentration enclaves.
- Premium upholstery options for long-lasting durability.
- Units nest for economical shipping.
- Please contact [xFriends@Haworth.com](mailto:xFriends@Haworth.com) for special dimensions enquires, additional material content information, or any other questions.

### MATERIAL CONTENT based on Return Focus Pod

#### Materials by % of Total Weight

