

HAWORTH®

Very®

Task and Collaborative Seating









VERY SMART

By incorporating ergonomics and work style knowledge, Very provides the ultimate in comfort. For instance, the Conference and Seminar models intelligently support users through a unique intuitive recline. Or, available on the Conference, Seminar, and Side models, the innovative, industry-leading Very Tetro™ back mixes materials for a feel good experience that is also functionally easy to clean and highly durable.

Shown Above: Very Conference with Intuitive Recline









The sleek Very Task chair's intelligent platform extends its reach from simple elegance to high-intensity performance. Its best-in-class features include an optional asymmetrical lumbar and four-dimensional arms for healthy seating.

VERY VERSATILE

With models and options to support a variety of task and collaborative needs, Very works to bring consistency throughout an organization. Featuring chairs perfect for corner offices, conferencing, cafeterias, medical centers, classrooms—and all points in between—Very can operate in a wide range of environments.



EXTENSIVE ARRAY OF ENVIRONMENTS

1. Café 2. Patient Room 3. Touchdown Office 4. Classroom 5. Break Room 6. Dorm Room 7. Coffee Shop 8. Home Office









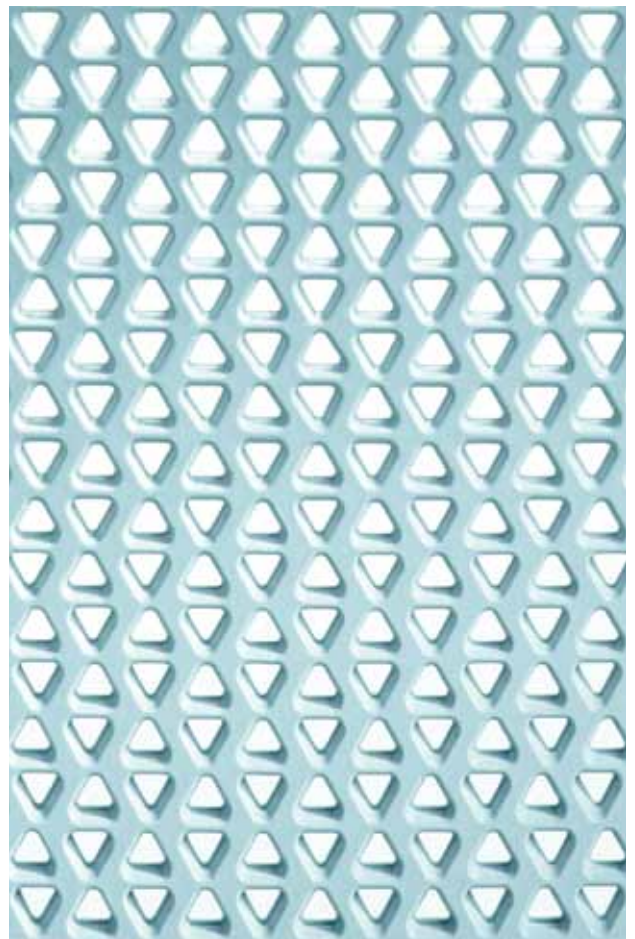
THE FULL SPECTRUM

Whether exuding a quiet sophistication or a colorfully eclectic personality, the Very line can highlight any style with its impressive array of colors.



Polymer and Tetro Colors. Available on Conference, Seminar, Side, and Wire Stacker (Polymer Only on Wire Stacker).

Grass	Glacier	Slate	Canvas	Ember
Tomato	Cocoa	Snow	Black	Fog



Perforated back. Allows chair to breathe and promotes flexibility and torsional movement. Available on Conference, Seminar, and Side.

Mesh Colors. Available on Task chairs.



Glacier



Fog



Snow



Black



Cocoa



Slate



Ember









VERY RESPONSIBLE

Each Very family member can be disassembled quickly and returned to Haworth at the end of life through Haworth's Take Back program. Very seating achieves BIFMA level™ 2 and GREENGUARD® Children & Schools certification and may contribute to LEED® credits. Very Collaborative models have earned Gold and Silver Cradle to Cradle® certification by MBDC. Very Task is an industry benchmark made with up to 65% recycled content and is up to 98% recyclable.





Asymmetrical Lumbar (Optional). Only Haworth offers a side-independent asymmetrical lumbar feature. This is the highest performance available in lumbar support.

Back Lock (Standard) and Forward Tilt (Optional). The back lock is an important feature for users who are more comfortable working in an upright position. A forward tilt of the seat pan and back can support users in task-intensive applications while encouraging a healthy posture.

Tilt-Tension Adjustment (Standard). Unrestricted ability to adjust the tilt tension based on user preference in any position.

Pneumatic Seat-Height Adjustment (Standard). Accommodates a wide range of users, adjusting 16-21".

Supportive Mesh. Supports the back while providing breathability and comfort.

Four-Dimensional (4D) Arms (Optional). To meet the size range of users and their functional needs, Very offers 4D arms that are height-adjustable, front-to-back adjustable, width-adjustable, and pivot. Also available are height-adjustable arms, fixed arms, and armless.

Seat-Depth Adjustment (Standard). 3" sliding seat reduces the pressure behind the knees and does not restrict blood flow, encouraging circulation.

FEATURES & SPECIFICATIONS



Task and Conference Bases: Aluminum – Painted Metallic Silver, Painted Metallic Champagne, Painted Metallic Gunmetal, Painted Black, Polished Aluminum | Plastic – Black or Fog

Seminar, Side, Wire Stacker Bases: Painted Metallic Silver, Painted Metallic Champagne, Painted Metallic Gunmetal, Painted Black, Trivalent Chrome
Note: Finish Options “TR-MG Metallic Gunmetal” and “TR-MC Metallic Champagne” are orderable from North America only.

Arm Caps: Black or Fog

Upholstery: Collaborative Seating – Optional upholstered seat and/or back pad | Tetro Back – Optional upholstered seat | Task Seating – Optional upholstered back jacket



Casters or Glides: Casters – Two-Tone Fog (Hard) or Black (Hard or Soft)
Glides – Fog or Black (Plastic or Felt)



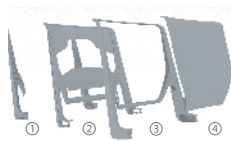
Headrest: For tailored executive applications, a headrest is an option on Very Task chairs, providing the user added comfort and support through multiple adjustments.



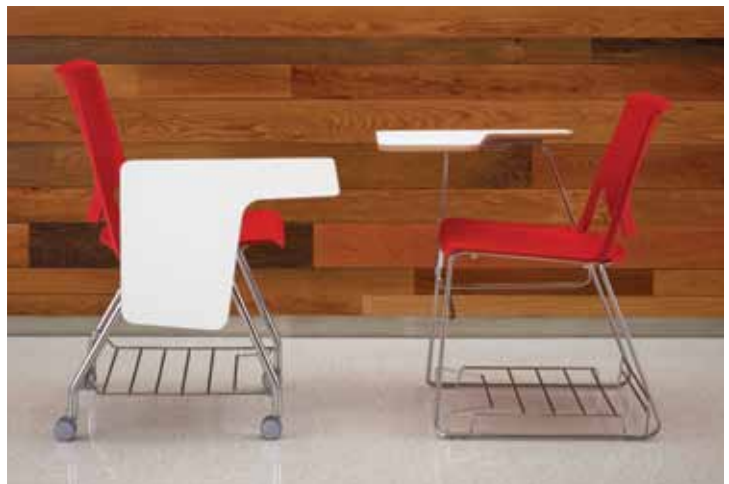
Ganging: Seminar, Side, and Wire Stacker chairs can gang. Seminar and Side use the above-shown ganging bracket and gang arm chair-to-armless, armless-to-armless, and arm chair-to-arm chair. The Wire Stacker uses a ganging clip and gangs arm chair-to-armless and armless-to-armless.



Tetro Back: Using a state-of-the-art process, this innovative one-piece back delivers a soft membrane with a built-in lumbar support, providing users with unexpected comfort and durability at a sensible price. Available on the Conference, Seminar, and Side chairs and stools.



4 Shot Tetro Back Process: **Shot 1**—Right and left structural components, provides majority of the back strength; **Shot 2**—Connects Shot 1 components at lumbar and shoulders, provides built-in lumbar and upper-back support; **Shot 3**—2 mm encapsulating wall around frame; **Shot 4**—Fills in the chair back, provides flexible, durable membrane.



Tablet Arms and Storage Racks: Tablet arms are available on the Seminar, Side, and Wire Stacker chairs. The Side and Seminar tablet arm flips up and folds away for storage, while the Wire Stacker tablet simply flips up for access. The Wire Stacker tablet arm is field retrofittable. The Seminar, Side, and Wire Stacker also have storage racks. The Wire Stacker storage rack is field retrofittable.



Stacking: Wire Stacker chairs stack 40 high on the available stacking cart and 10 high on the floor. Seminar and Side chairs stack 8 high on their cart and 5 high on the floor. Wire Stacker stools stack 10 high on the floor. Side stools stack 5 high on the floor.



Stool: For high-top table applications, a stool version is available on the Wire Stacker, Side, and Conference models.

FEATURED FABRICS & FINISHES



Cover

Very Task: Haworth Nature Leather White Seat, Snow Mesh Back, Fog Trim, Polished Aluminum Base, Two-Tone Casters

Very Conference: Glacier Poly Seat, Glacier Tetro Back, Fog Trim, Polished Aluminum Base, Two-Tone Casters

Very Side: Ember Poly Seat, Ember Poly Back, Fog Trim, Trivalent Chrome Frame and Base



Page 3

Very Task: Haworth Nature Leather Ink Seat, Black Mesh Back, Fog Trim, Polished Aluminum Base, Two-Tone Casters

Very Task: Luna Doodad Abele Seat (No Longer Available), Black Mesh Back, Black Trim, Black Plastic Base, Black Casters



Page 4

Very Conference: Haworth Nature Leather White Seat, Snow Tetro Back, Fog Trim, Polished Aluminum Base, Two-Tone Casters

Page 5

Very Conference: Maharam Repeat Dot Ring Robin Reverse Seat, Fog Poly Back, Fog Trim, Polished Aluminum Base, Two-Tone Casters



Page 14 / 15

Very Tasks: Haworth Nature Leather White Seat, Snow Mesh Back, Fog Trim, Polished Aluminum Base, Two-Tone Casters



Page 16 / 17

Very Wire Stackers: Shown in variety of available colors



Page 18 / 19

Very Side Stools: Grass Poly Seat, Grass Tetro Back, Fog Trim, Trivalent Chrome Frame and Base

VERY COLLABORATIVE SEATING AWARDS

2010 IDEA Gold (International Design Excellence Award)

2010 reddot (International Product Design Prize)

2009 FX International Interior Design Award

2009 GOOD DESIGN

Best of NeoCon® 2008 Gold Seating Stacking / Seminar, Side, and Wire Stacker Chair

Best of NeoCon® 2008 Silver Seating Conference / Conference Chair

VERY TASK SEATING AWARDS

Best of NeoCon® 2010 Gold Seating Conference / Task Chair

Best of NeoCon® 2010 Silver Seating Task / Task Chair



Page 6

Very Sides: Luna Sparkle Sangria Seat, Snow Poly Back, Fog Trim, Trivalent Chrome Frame and Base

Page 7

Very Tasks: Luna Embarcadero Hawthorne Seat, Snow Mesh Back, Fog Trim, Polished Aluminum Base, Two-Tone Casters



Page 8

Very Task: Haworth Nature Leather White Seat, Snow Mesh Back, Fog Trim, Polished Aluminum Base, Two-Tone Casters

Page 9

Very Tasks: Maharam Divina by Kvadrat 562 Seat, Ember Mesh Back, Fog Trim, Fog Plastic Base, Two-Tone Casters



Page 11

Very Task: Haworth Nature Leather White Seat, Snow Mesh Back, Fog Trim, Polished Aluminum Base, Two-Tone Casters



Page 20 / 21

Very Seminars: Luna Whimsy Allure Seat, Luna Whimsy Allure Back with Fog Poly, Fog Trim, Trivalent Chrome Frame and Base



Page 22

Very Side: Tomato Poly Seat, Tomato Poly Back, Fog Trim, Trivalent Chrome Frame and Base

Page 23

Very Task: Maharam Divina by Kvadrat 562 Seat, Ember Mesh Back, Fog Trim, Fog Plastic Base, Two-Tone Casters

VERY DESIGNERS

Very Task was designed by the Haworth Design Studio.

Very Collaborative Seating was designed by the Haworth Design Studio and Simon Desanta.



HAWORTH®

Haworth is a registered trademark of Haworth, Inc.
©Haworth Asia Pacific 2013

haworth.com | haworth-europe.com | haworth-asia.com